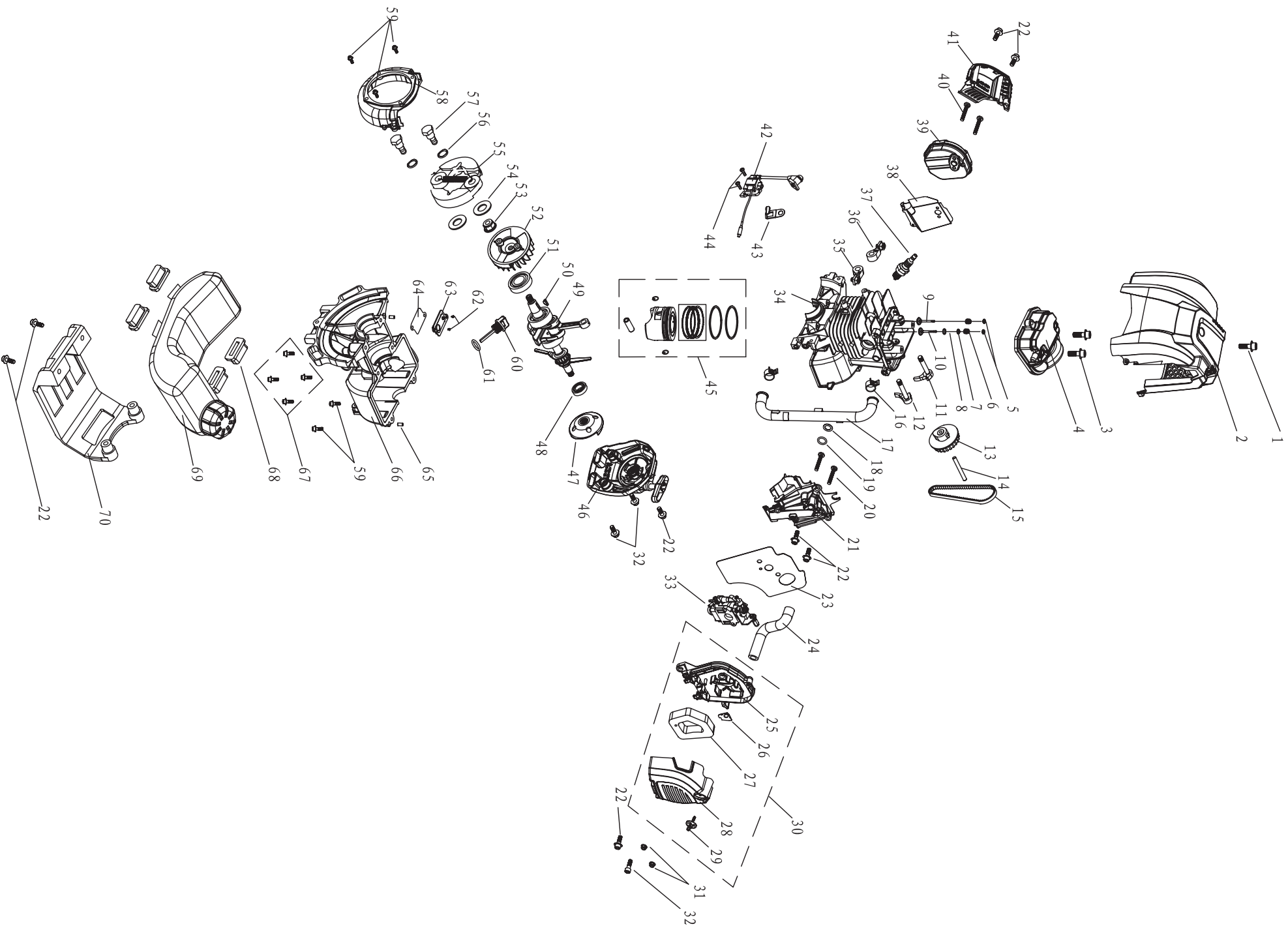


Transmission spare parts list

Drawing No.	english part name	QTY.
CZG-1A-01000	drive shaft base assy	1
CZG-1A-01001	clutch drum	1
CZG-1A-01002	internal spring circlip φ35	1
CZG-1A-01003	bearing 6202-2Z	1
CZG-1A-01004	external spring circlip φ15	1
CZG-1A-01005	drive shaft base	1
CZG-1A-01006	anti-vibration rubber	1
CZG-1A-01007	drive shaft aluminum connector	1
CZG-1A-01008	internal spring circlip φ45	1
CZG-1A-01009	screw M6x30	5
CZG-1A-01010	screw M5x14	1
CZG-1A-11000	accelerate wire fixing clip	1
CZG-1A-03000	hanger + screw+nut	
CZG-1A-03001	screw M5x25	1
CZG-1A-03002	nut M5	1
CZG-1A-03003	hanger	1
CZG-1A-05000	handle fixer assy	1
CZG-1A-05001	screw M6x25	6
CZG-1A-05002	down handle fix	1
CZG-1A-05003	handle fix anti-vibration	2
CZG-1A-05004	handle fix middle	1
CZG-1A-05005	upper handle fix	1
CZG-1A-00004	accelerate wire clip	1
CZG-1A-04001	switch	1
CZG-1A-04002	left handle grip+pipe	1
CZG-3A-00000	pipe assy 748mm	1
CZG-3A-00001	aluminum pipe	2
CZG-3A-00002	drive shaft	1
CZG-1A-02000	oil bearing	6
CZG-3A-01000	connector with screw+nut	1
CZG-3A-01001	screw M6x18	1
CZG-3A-01002	connector without screw+nut	1
CZG-3A-01003	nut M6	1
CZG-3A-00000	pipe assy 748mm	1
CZG-3A-00003	drive shaft	1
CZG-3A-00004	drive shaft spacking cover	1
CZG-1A-05002	screw M6x25	2
CZG-1A-06001	metal connector	1
CZG-1A-06100	guarder assy	1
CZG-1A-07100	gearbox assy	1
CZG-1A-09000	nylon head	1
CZG-1A-10000	3T metal blade	1



GB/T 70.1-2000	Screw M5*18	1
G139-3D-04000	Cylinder cover assy	1
DIN251	Screw M5*12	1
G139F-3A-00001	Cylinder head cover	1
G139F-3A-00022	Air valve clip	2
G139F-3A-00015	Air valve spring	2
G139F-3A-26000	Air valve oil seal	1
G139F-1A-00012	Air valve oil seal washer	1
G139F-3A-00020	Inlet valve	1
G139F-3A-00019	Exhaust valve	1
G139F-3A-17000	Cam behind arm assy	1
G139F-3A-16000	Cam front arm assy	1
G139F-3A-03000	Cam assy	1
G139F-3A-00021	Cam pin	1
G139F-3A-15000	Belt	1
G139F-3A-00016	Oil return pipe circlip	2
G139F-3A-00011	U type oil return pipe	1
G139F-3A-00014	Air inlet tube gasket	1
G139F-3A-00009	Air inlet tube O ring	1
GB /T 5782-2000	Screw M5*55	2
G139F-3A-00004	Air inlet pipe	1
GB/T 70.1-2000	Screw M5*16	8
G139F-3A-00017	Carburetor gasket	1
G139F-3A-00010	S type oil return pipe	1
G139F-3A-07100	Air filter base	1
G139F-3A-07101	Air filter plate	1
G139F-3A-07002	Filter foam	1
G139F-3A-07001	Air filter cover	1
G139F-1E-07200	Air filter button	1
G139F-3A-07000	Air filter assy	1
GB/T 6177.1-2000	Nut M5	2
GB/T 70.1-2000	Screw M5 *25	3
G139F-3A-24000	Carburetor	1
G139F-3A-01000、G139F-3A-02000	Cylinder+crankcase assy	1
G139F-3A-18000	Exhaust valve arm assy	1
G139F-3A-19000	Inlet valve arm assy	1
G139F-3A-25000	Spark plug	1
G139F-3A-00005	Muffler division plate	1
G139F-3A-13000	Muffler assy	1
GB/T 70.1-2000	Screw M5*50	2
G139-3D-00003	Protector guard	1
G139F-3A-23000	Ignition coil assy	1
G139F-3A-00003	Wire clip	1
GB/T 70.1-2000	Screw M4*16	2
G139F-1A-21001	Piston assy	1
G139-3D-11000	Recoil starter assy	1
G139F-3A-27000	Starter drive plate	1
GB/T 9877-2008	Small oil ring	1
G139F-3A-21000	Crankshaft assy	1
GB/T 1099-1990	Semi-circle key	1
GB/T 9877-2008	Big oil ring	1
G139F-3A-22000	Flywheel	1
GB/T 6177.1-2000	Nut M8	1
GB 97.1-85	Flat gasket	2
G139F-1A-23000	Clutch assy	1
G139F-1A-00080	Corrugated gasket	2

G139F-1A-00082	Bolt	2
G139F-3A-00002	Side cover	1
GB/T 70.1-2000	Screw M5*20	5
G139F-1A-05001	Oil ruler	1
G139F-1A-05002	Oil ruler O ring	1
GB/T 818-2000	Screw M4*8	2
G139F-3A-00018	Valve gasket	1
G139F-3A-12000	Valve assy	1
GB/T 119-1996	Dowel pin	2
GB/T 70.1-2000	Screw M5*35	4
G139F-3A-00007	Fuel tank anti-vibration cushion	4
G139F-3A-10000	Fuel tank assy	1
G139F-3A-09000	Fuel tank plastic support	1